



# DUNE PALMS

## BRIDGE IMPROVEMENT PROJECT

### CONSTRUCTION UPDATE: *Week of November 13, 2023*

**Construction on the northbound (eastern) bridge span continues with a project milestone concrete placement planned in late November.**

#### TRAFFIC CONTROL

Dune Palms Road remains closed to through traffic for public safety. The closure is between Corporate Center Drive on the south and the Dune Palms Mobile Home Estates to the north. Please use Adams or Jefferson streets as alternate routes.

**Business access remains open**



#### PROJECT UPDATE

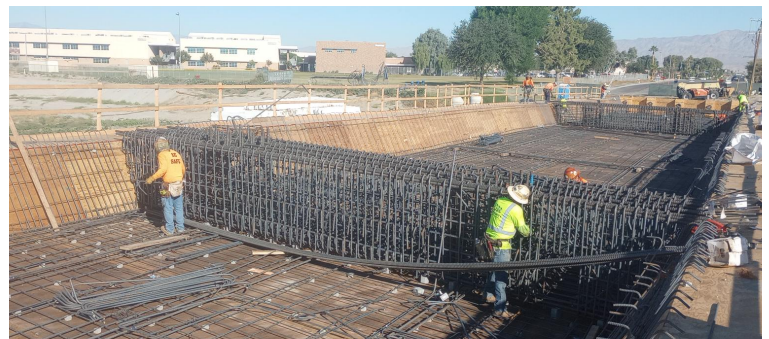
**Saturday work planned in November**

Crews are completing rebar work on the interior of the eastern bridge span, called the stem and soffit, to prepare for a project milestone concrete placement later in November. Crews may be working Saturdays as needed to stay on schedule.

Next up after the stem and soffit concrete placement, crews will construct the temporary wooden bridge deck in preparation for the bridge deck concrete placement planned for mid-December.



This photo shows crews working on the bridge interior. The stems are the raised rebar as shown in this photo, and the flat area between them is the soffit. Together, they create the bridge interior which will be covered by the bridge deck.

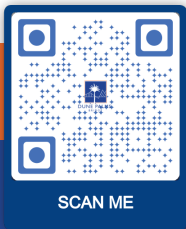


Crews completing stem and soffit rebar work on the northbound/eastern bridge span interior.



Click the live link below to view our LIVE stream video:

<https://app.truelook.cloud/dashboard/14258/15367/live?code=bstl0jjgao47dq5sz36cdk111>



### STAY INFORMED

Visit: [www.laquintaca.gov/dunepalms](http://www.laquintaca.gov/dunepalms) to sign up for text or email updates. Call: (760) 422-3370

Email: [info@DunePalms.com](mailto:info@DunePalms.com) Follow: @Dune Palms Rd. Bridge

@Dune\_Palms\_Bridge

